

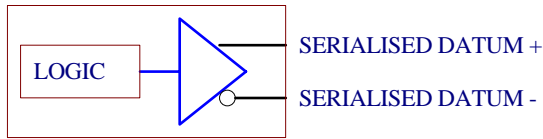
Absolute serial asynchronous encoder

Electronics Data

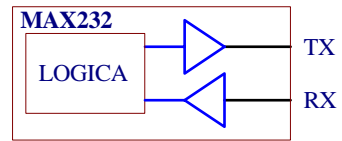
Resolution:	Single turn 12 Bit Multiturn 24 bit (12 Bit single turn - 12 bit multiturn)
Power supply:	11-24V +/- 5%
Current consumption:	Single turn 3Watt max. Multiturn 6 Watt max.
Baud rate :	300 to 115.200 baud
Outputs:	Differential in RS422,RS232 standard
Programmable Code:	Gray/Binary/BCD/ASCII
Programming:	Line in RS232
Operating Temp.:	0/60°C

Output circuits

Output Driver RS-422

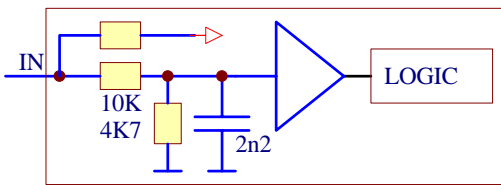


Circuit RS-232

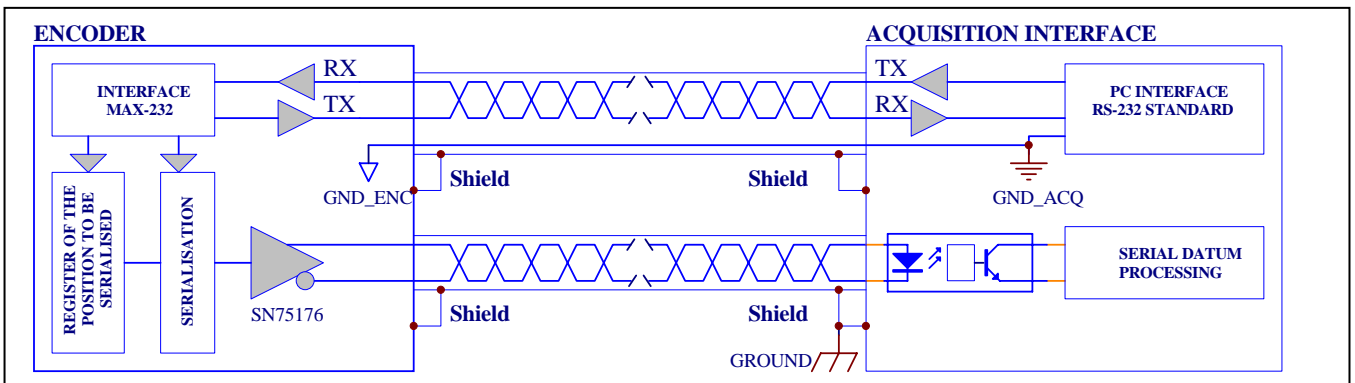


Input circuits

Programming Bit Input



Data transmission



Ordering code

*	*	*	-	*	*	*	*	*	/	*	/	*
Series			Shaft		Flange	Outputs	Connections	Options	Pulses/Turn			
Ø58mm ASI = Singleturn ASM = Multiturn			Ø58mm 3=Ø 6mm L10mm 6=Ø 8mm L20mm 1=Ø10mm L20mm		Ø58mm 1=See 3= page 6= draw	1=RS422- RS485/ RS232	1=9416 Axial 2=9416 Rad 9=Cable axial 3=Cable rad.	0=None				
Ø65mm AMS = Singleturn AMM = Multiturn			Ø65mm 3=Ø 6mm L10mm(AMS) 6=Ø 8mm L20mm (AMS) 1=Ø10mm L20mm		Ø65mm 3=Ø 65mm							
Ø90mm ATS = Singleturn ATM = Multiturn			Ø90mm 1=Ø 10mm L25mm 2=Ø 12mm L25mm		Ø90mm 3=Ø 90mm							

		<h2>Connections</h2>	
CABLE	Contact 12P IP65		
Pink	1		
Pink/Gray	2		
Brown	3	DATA A. +	Data +
Brown/Gray	4	DATA A. -	Complementary Data +
Blue	5	PROG_TX	Programming Input
Blue/red	6	PROG_RX	Programming Input
Beige	7		
Violet	8	UP/DOWN	Up/Down (active low)
Yellow/White	9	RESET	Reset
Yellow/Brown	10		
Red	11	POWER +	Power + (11-24V)
Black	12	POWER. -	Power - (0V)

In configuration standard, the encoder is: 12 Bit (singleturn) or 24 Bit (multiturn) of resolution, Parity inactive, increase clockwise and Binary code.
The programming encoder parameter, effect in RS232 with a module for PC supply in equipment.