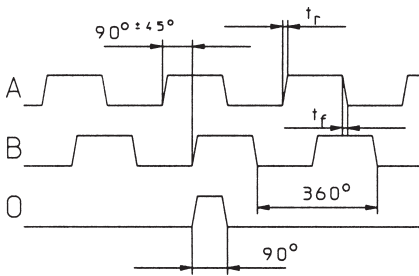


Electrical Specifications:

| | | |
|---------------------------------------------------------|-----------------------------|--------------------------|
| Output circuit: | RS 422 (TTL compatible) | Push.Pull-connection |
| Supply voltage: | 5 V (± 5%) bzw. 10 - 30 VDC | 10 - 30 VDC |
| Current consumption without inverting (without load): | _____ | typ. 46 mA / max. 78 mA |
| Current consumption with inverting (without load): | typ. 20 mA / max. 33 mA | typ. 77 mA / max. 126 mA |
| Permissible load / channel: | max. +/- 20 mA | max. +/- 30 mA |
| Impulse frequency: | max. 200 kHz | max. 200 kHz |
| Signal level high: | min. 2,5 V | min. U _B -3 V |
| Signal level low: | max. 0,5 V | max. 2,5 V |
| Build-up time t _r : | max. 200 ns | max. 1µs |
| Fall time t _f : | max. 200 ns | max. 1µs |
| Short circuit proof 1): | yes 2) | yes 2) |
| Reverse battery protection of the distribution voltage: | no | no |

1) At a correctly installed distribution voltage U_B
 2) Only one channel at a time: at U_B = 5 V the short circuit is opposite the channel, 0 V and + U_B permissible.
 at U_B = 10 - 30 V the short circuit is opposite the channel and 0 V permissible.

Impuls illustration:



Direction of rotation (referring to impulse illustration)
 Shaft turning in clockwise direction whilst facing the shaft.

Recommended Receiver according to RS 422- specification
 e.g. DS 3486 or AM 26LS32

All channels can also be operated in a inverted mode.

Impulse numbers that can be supplied at short notice:

- 10, 20, 30, 50, 60, 100, 120, 125, 127, 150, 180, 200, 216, 240, 250, 254, 256, 300, 340, 360, 400, 500, 512, 600, 625, 720, 750, 800, 900, 1000, 1024, 1250, 1270, 1400, 1500, 1800, 2000, 2048, 2400, 2500, 3000, 3600, 4000, 4096, 5000

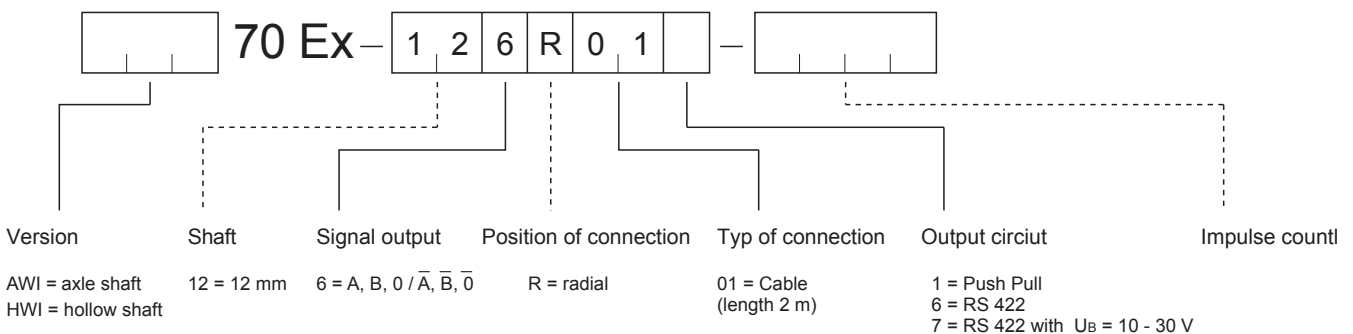
Other Impulse number upon request

Pin configuration:

| | | | | | | | | | | | |
|-------|-------|------------|-----------------|------------------------|-------|-----------|------|-----------|------|-----------|--------|
| Sig. | 0 V | 0 V Sensor | +U _B | +U _B Sensor | A | \bar{A} | B | \bar{B} | 0 | $\bar{0}$ | sheath |
| color | white | grey/pink | brown | red/blue | green | yellow | grey | pink | blue | red | SG |

SG = Sheath is positioned on casing of screwed cable gland.
 The sensor wires are internally connected to the power supply.
 Unused outlets must be insulated before the initial operation.

Order No.:



* Other cable lengths upon request
 Accessories: adapter flange F 70/ 14
 (AWI version only)